

## Planning Sub-Committee A

Monday 29 April 2019

6.30 pm

Ground Floor Meeting Room G02, 160 Tooley Street, London SE1 2QH

## Supplemental Agenda No.1

### List of Contents

Item No.	Title	Page No.
7.	<b>Development management items</b>	1 - 15
	Tabled items – addendum report, members' pack	

<b>Item No:</b> 7.1	<b>Classification:</b> Open	<b>Date:</b> 29 April 2019	<b>Meeting Name:</b> Planning Sub-Committee A
<b>Report title:</b>		<b>Addendum</b> Late observations, consultation responses, and further information.	
<b>Ward(s) or groups affected:</b>		Dulwich Village	
<b>From:</b>		Director of Planning	

## PURPOSE

1. To advise members of observations, consultation responses and further information received in respect of the following planning applications on the main agenda. These were received after the preparation of the report and the matters raised may not therefore have been taken in to account in reaching the recommendation stated.

## RECOMMENDATION

2. That members note and consider the late observations, consultation responses and information received in respect of each item in reaching their decision.

## FACTORS FOR CONSIDERATION

3. Late observations, consultation responses, information and revisions have been received in respect of the following planning applications on the main agenda:

### **Item 7.1 – Application 18/AP/1204 for: Full Planning Permission – London Borough of Southwark Sports Club, Dulwich Common, London SE21 7EU**

#### Amendment to the description

4. Under proposal the wording should be updated to reflect the correct days and hours of use, which should read:

*Installation of a floodlighting system for the pitch area to include 6 x 15 metre galvanised steel columns (with relevant concrete block foundations), each column to be mounted with two floodlights, installation of an electrical junction box fabricated from galvanised steel with and associated underground cabling ducts. Hours of operation to be 12:00-22:00 Monday to **Friday**, 11:00-22:00 Saturday to Sunday and Bank Holidays.*

#### Amendment to paragraph 7

5. This paragraph should be updated to accurately reflect the proposed hours of use, which should read:

*The proposed hours of use are to be:*

- *Monday-Friday: **12:00-22:00***
- *Saturday: 11:00-22:00*
- *Sunday and Bank Holidays: **11:00 – 22:00***

Amendment to paragraph 37

6. This paragraph should be updated to refer to the correct application reference, which should read:

*It is noted that previous permissions relating to flood lighting had imposed earlier lighting curfews (see application ref: 16/AP/3218). However, given that the likelihood of regular night time use during the Summer for football games is low; and the proposal has incorporated shading mechanisms on the floodlights to mitigate light spill; and new screening trees to the North; on balance such a condition is not deemed necessary in this instance which the council's ecology officer has agreed.*

Update to condition 1

7. Condition 1 should be updated to include a plan detailing the floodlights found within the External Sports Plating Field Lighting Design Assessment Statement; this should read:

*The development hereby permitted shall not be carried out otherwise than in accordance with the following approved plans:*

*E-01-01 PECKHAM TOWN F.C. PITCH LAYOUT  
C201/22/1/3UK STANDARD HL250H RANGE OF COLUMN FOUNDATIONS.  
(MASS CONCRETE UK TNSSTALLATION ONLY)  
**HL250D15/2/AL5760 - HL250D15 MAST** (as shown on page 13 of the Lighting Design Assessment Statement)*

*Reason:*

*For the avoidance of doubt and in the interests of proper planning.*

Additional wording to condition 4

8. It is recommended that condition 4 should be amended to include a requirement for automatic cut off devices for the floodlighting system. The following wording is recommended:

*The floodlights hereby approved shall not be used after 22:00 on any day and the lighting spill from them shall be no more than 2 lux on any neighbouring property. **The floodlights hereby approved shall be fitted with automatic cut-off switches so that the lights automatically switch off at 22:00.***

*Reason*

*To protect the amenity of neighbours in accordance with the National Planning Policy Framework 2019, Strategic Policy 12 Design and Conservation and Strategic Policy 13 High environmental standards of The Core Strategy 2011 and Saved Policies 3.2 Protection of Amenity and 3.14 Designing out crime of the Southwark Plan 2007.*

**REASON FOR URGENCY**

9. Applications are required by statute to be considered as speedily as possible. The application has been publicised as being on the agenda for consideration at this meeting of the Planning Committee and applicants and objectors have been invited to attend the meeting to make their views known. Deferral would delay the processing of the applications and would inconvenience all those who attend the meeting

### REASON FOR LATENESS

10. The new information, comments reported and corrections to the main report and recommendation have been noted and/or received since the committee agenda was printed. They all relate to an item on the agenda and Members should be aware of the objections and comments made.

### BACKGROUND DOCUMENTS

Background Papers	Held At	Contact
Individual files	Place and Wellbeing Department 160 Tooley Street London SE1 2QH	Planning enquiries Telephone: 020 7525 5403

# Welcome to Southwark Planning Sub-Committee A

29 April 2019

## MAIN ITEMS OF BUSINESS

ITEM 7.1 18/AP/1204 – London Borough of  
Southwark Sports Club, Dulwich Common,  
London SE21 7EU



Councillor Lorraine Lauder MBE (chair)



Councillor Jane Salmon (vice-chair)



Councillor Richard Leeming



Councillor David Noakes



Councillor Sandra Rhule



Councillor Martin Seaton



Councillor Michael Situ

# **Item 1 – London Borough of Southwark Sports Club, Dulwich Common, London SE21 7EU Full Planning Permission Application 18/AP/1204**

Installation of a floodlighting system for the pitch area to include 6 x 15 metre galvanised steel columns (with relevant concrete block foundations), each column to be mounted with two floodlights, installation of an electrical junction box fabricated from galvanised steel with and associated underground cabling ducts. Hours of operation to be 12:00-22:00 Monday to Saturday, 11:00-22:00 Saturday to Sunday and Bank Holidays.



Site Location Plan



Search for a place or address



2D



16°



Search for a place or address





Search for a place or address



2D



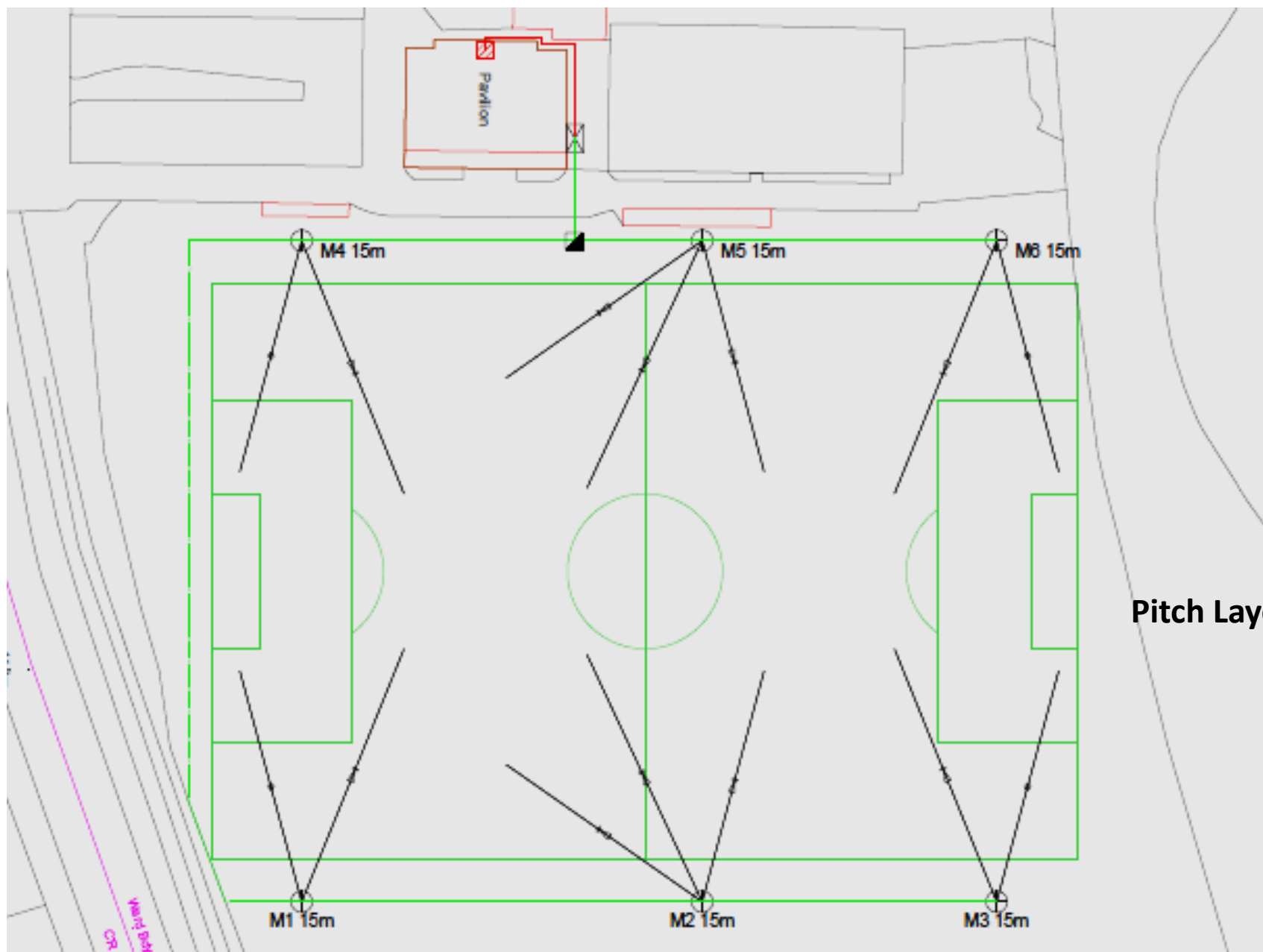
A205 Dulwich Common

A205

College Rd

16°

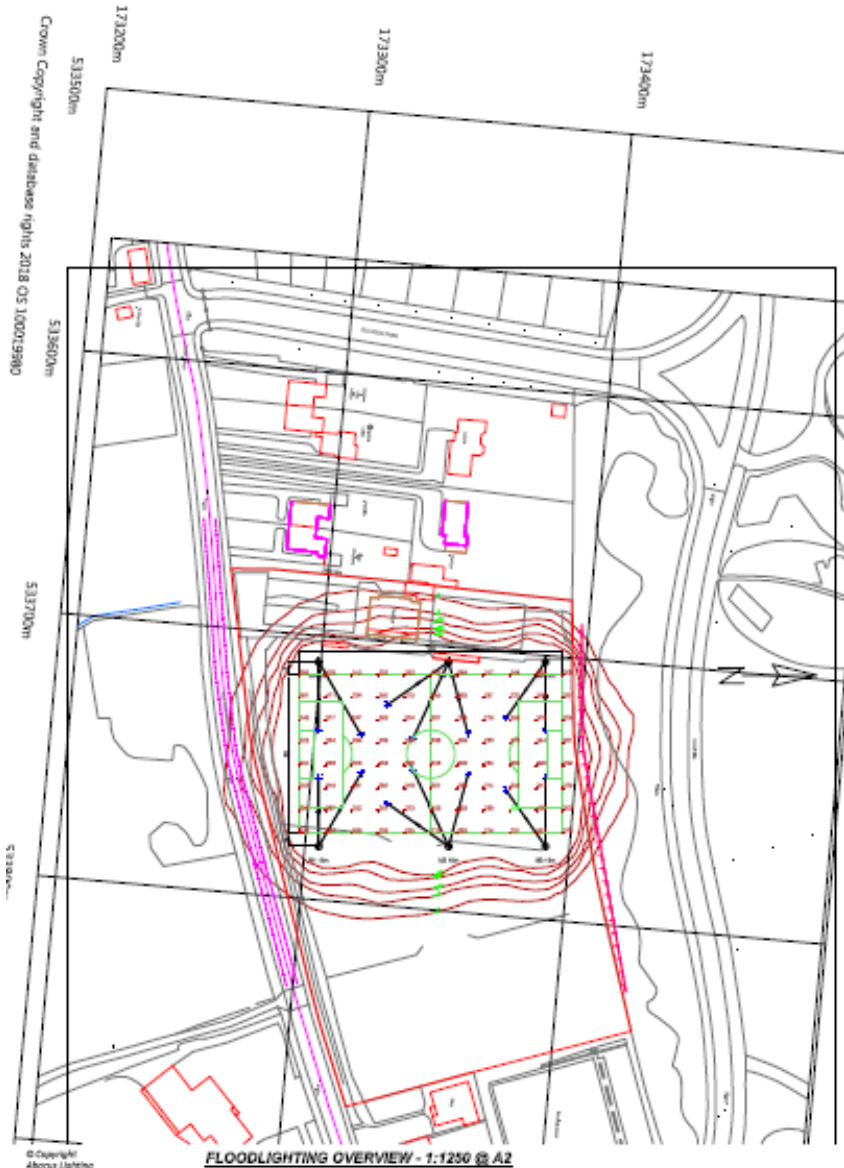
6



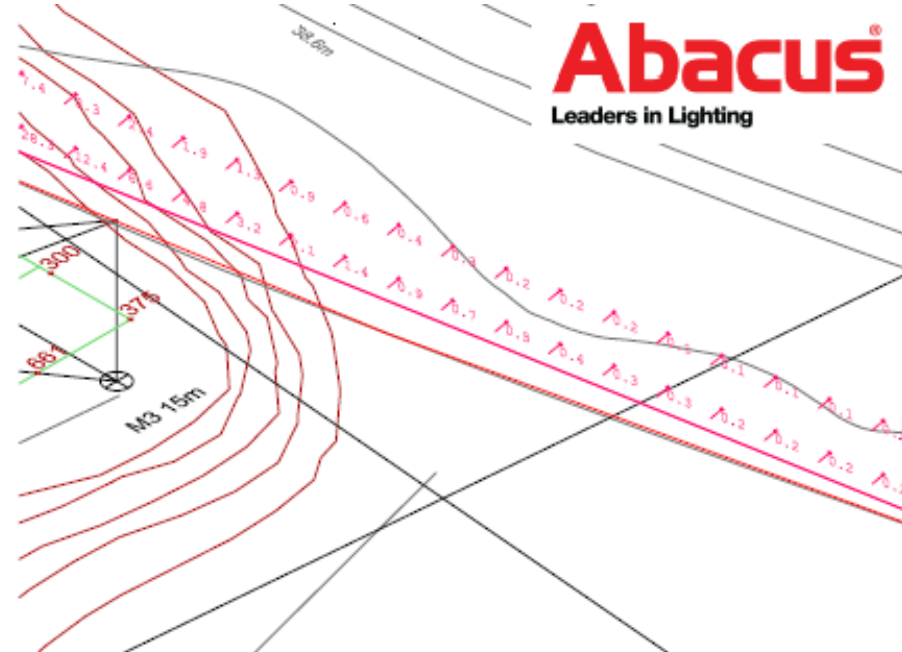
Pitch Layout

10





The lighting Design / Scheme and results given are based on the specific performance of Abacus lighting products. This design and supporting documents are the sole property of Abacus Lighting Limited. This design and supporting documents must not be reproduced in any way without the written permission of Abacus Lighting. Any use of this design with non-Abacus luminaires after planning has been submitted may breach planning consent.



**FLOODLIGHTING EQUIPMENT:**  
 6 x 15m MASTS (M15M)  
 M1.ML...1 x AL8001 POS A2,2KW/MH-WFCB + COWL 5  
 M2.ML...1 x AL8002 POS A2,2KW/MH-WFCB + COWL 3  
 M3.ML...1 x AL8002 POS A2,2KW/MH-WFCB + COWL 3  
 M4.ML...1 x AL8001 POS A2,2KW/MH-WFCB + COWL 4  
 M5.ML...1 x AL8002 POS A2,2KW/MH-WFCB + COWL 3

**LAMPS (PHILIPS)**  
 200W MHVFC2293640B (232 000 INITIAL Lm)

**ILLUMINANCE LEVELS:**  
 MAINTAINED  
 E<sub>min</sub> = 200 LUX

**UNIFORMITY**  
 E<sub>min</sub>/E<sub>max</sub> = 0.6  
 E<sub>min</sub>/E<sub>max</sub> = 0.25

Max Glare Rating = 30

**GRID VALUES IN LUX**  
 GRID INTERVAL = 5m  
 CONTOUR VALUES IN LUX  
 CONTOURS 2.5, 10, 25, 50 LUX

**MAINTENANCE FACTOR = 0.80**

Please Note: This design has been produced as an 'at open' area.

Equipment	Beam Spread	Beam Angle	Beam Diameter	Beam Length	Beam Area	Beam Volume	Beam Weight	Beam Power	Beam Energy	Beam Momentum	Beam Pressure	Beam Temperature	Beam Humidity	Beam Density	Beam Viscosity	Beam Surface Tension	Beam Capillary Action	Beam Cohesion	Beam Adhesion	Beam Wettability	Beam Contact Angle	Beam Spreading Coefficient	Beam Spreading Factor	Beam Spreading Index	Beam Spreading Ratio	Beam Spreading Coefficient	Beam Spreading Factor	Beam Spreading Index	Beam Spreading Ratio
AL8001	15m	15m	15m	15m	15m	15m	15m	15m	15m	15m	15m	15m	15m	15m	15m	15m	15m	15m	15m	15m	15m	15m	15m	15m	15m	15m	15m	15m	15m
AL8002	15m	15m	15m	15m	15m	15m	15m	15m	15m	15m	15m	15m	15m	15m	15m	15m	15m	15m	15m	15m	15m	15m	15m	15m	15m	15m	15m	15m	15m

ABACUS LIGHTING LTD.  
 Sutton-in-Ashfield, Nottinghamshire  
 NG17 5ET, England  
 Tel: (+44) 01623 511111  
 Fax: (+44) 01623 552133  
 Email: [light@abacuslighting.com](mailto:light@abacuslighting.com)  
 Home page: [www.abacuslighting.com](http://www.abacuslighting.com)

Lighting Project: EXTERNAL FLOODLIGHTING

Title: PECKHAM TOWN FC

Design Ref: UKS16133/5

Design By: ROB SCOTT

Date: 28/11/2018 Scale: NTS

Revision(s) From Previous Designs:  
 200 LUX OPTION (ADDITIONAL FLOODLIGHTS)  
 REVISOR NAME LOCATION OVERSEER FULL FOLLOW ADDITIONAL  
 REVISOR FROM DISCUSSION AND LOCATION

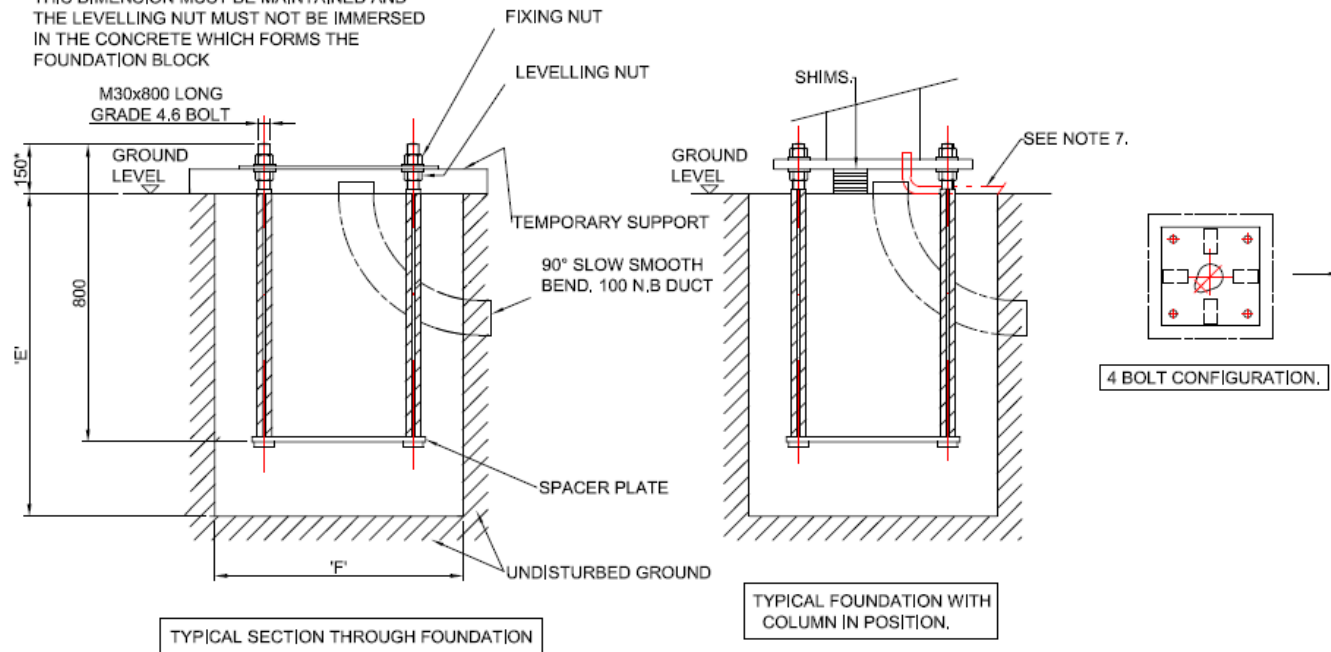
All luminance values are the result of computer calculations, based upon perfectly uniform luminaires. It is best to estimate to what extent and to the area under consideration, to consider the values may vary due to luminaires, luminaire distribution, reflection properties and identical results.



## Tree Planting Scheme



\* FOR CORRECT INSTALLATION OF COLUMN THIS DIMENSION MUST BE MAINTAINED AND THE LEVELLING NUT MUST NOT BE IMMERSED IN THE CONCRETE WHICH FORMS THE FOUNDATION BLOCK

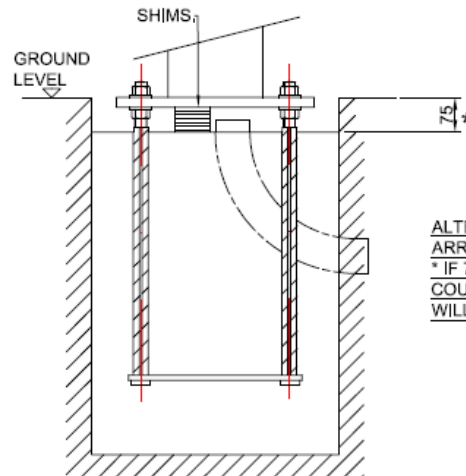


1. FIRST ANGLE PROJECTION.
2. DIMENSIONS SHOWN IN BRACKETS
3. DO NOT SCALE IF IN DOUBT ASK.
4. ALL STANDARDS AND SPECIFICATI
5. STAGE: 1  
SET BOLTS IN TEMPLATE AND SPACER TIMBERS WITH CORRECT PROJECT LARGER OR ADDITIONAL DUCT MA' STAGE: 2  
POUR CONCRETE TO GROUND LEV AND TEMPLATE WHEN CONCRETE RECOMMENDED MIX C25. STAGE: 3  
FIX COLUMN TO BOLTS AND ALIGN IS ALIGNED, PACK UNDER FLANGE! LEVELLING NUTS AND TIGHTEN TH SPECIFIED TORQUE.
6. N.B. BASIS OF DESIGN.  
PASSIVE RESISTANCE IS CONSIDER WITH A GROUND BEARING PRESSURE RESISTING MOMENT WILL ONLY BE FOUNDATIONS MUST BE DUG NET! ANY TRENCHES OR OTHER EXCAV. WITHIN 3m SHOULD BE BACKFILLED CONCRETE IN FOUNDATIONS TO H 25 N/mm sq. AT 28 DAYS, ALTERNATIVE BASES AVAILABLE ON REQUEST.
7. IF BASE IS GROUTED IN, IT IS RECC THE MAST BASE, AND THROUGH THE MOISTURE IN THE BASE OF THE CC

PASSIVE CONCRETE FOUNDATION STANDARD SIZES.			
O.T.M (kNm)	BEARING PRESSURE (kN/m sq.)	'F' WIDTH (mm)	'E' DEPTH (mm)
44.24	150	1280	1300

NON-PASSIVE CONCRETE FOUNDATION STANDARD SIZES.			
O.T.M (kNm)	BEARING PRESSURE (kN/m sq.)	'F' WIDTH (mm)	'E' DEPTH (mm)
44.24	75	1920	1110
44.24	100	1810	1055
44.24	150	1780	1040

FINAL TORQUE VALUES FOR HOLDING DOWN BOLT NUT = 310Nm.



→ INDICATES DIRECTION OF LOWERING OR: RAISING AND LOWERING MASTS  
NOTE:- FOR MASTS BEING LOWERED ADJACENT TO A FENCE OR OTHER OBSTRUCTION, INSTALL THE FOUNDATION ASSEMBLY SO THAT THE FALL IS 10° OFF SET AWAY FROM THE FENCE.

## Foundations

D	A.B.
C	L.D.
B	A.B.
A	A.B.
REV:	SIG:







